

# SageSTEP

## Sagebrush Steppe Treatment Evaluation Project

SageSTEP is an interdisciplinary, long-term research program evaluating ways to improve the health of sagebrush rangelands across the Great Basin. The purpose of SageSTEP is to conduct research and provide improved information about restoring sagebrush rangelands degraded by conifer encroachment or exotic grassland invasion. This information will help resource managers make restoration management decisions with reduced risk and uncertainty. The project is a collaborative effort among researchers and land managers in a variety of disciplines from five universities, six federal agencies and one non-profit organization in six states in the Great Basin.

Treatment options—including prescribed fire, mechanical thinning of shrubs and trees, and herbicide applications—are being evaluated to learn how to create healthy and diverse plant communities that will be more resilient to fire and resistant to weed invasion. All treatments were implemented in the same year at each site in the fall of 2006, 2007, or 2008. Baseline data were collected at all sites prior to treatment, and post-treatment data have been collected each subsequent year through 2009. Less frequent, longer-term monitoring will help researchers more fully understand treatment impacts.



### Multidisciplinary Data Collection

**Vegetation and Fuels:** 10-, 100-, and 1000-hour fuel samples, along with other vegetation and fuel measurements are collected in both the understory and overstory. Vegetation measurements will allow scientists to learn more about the plant community responds to prescribed fire and other management treatments.

**Soils:** Soils are sampled for chemical analyses and soil profile descriptions to tell scientists more about the effects of treatments on the availability of essential plant nutrients and to help explain vegetation response.

**Hydrology:** Rainfall simulations are conducted on small (0.5m<sup>2</sup>) and large (35m<sup>2</sup>) plots, and measurements are taken to help scientists better understand relationships between changes in vegetation and ground cover and runoff and erosion.

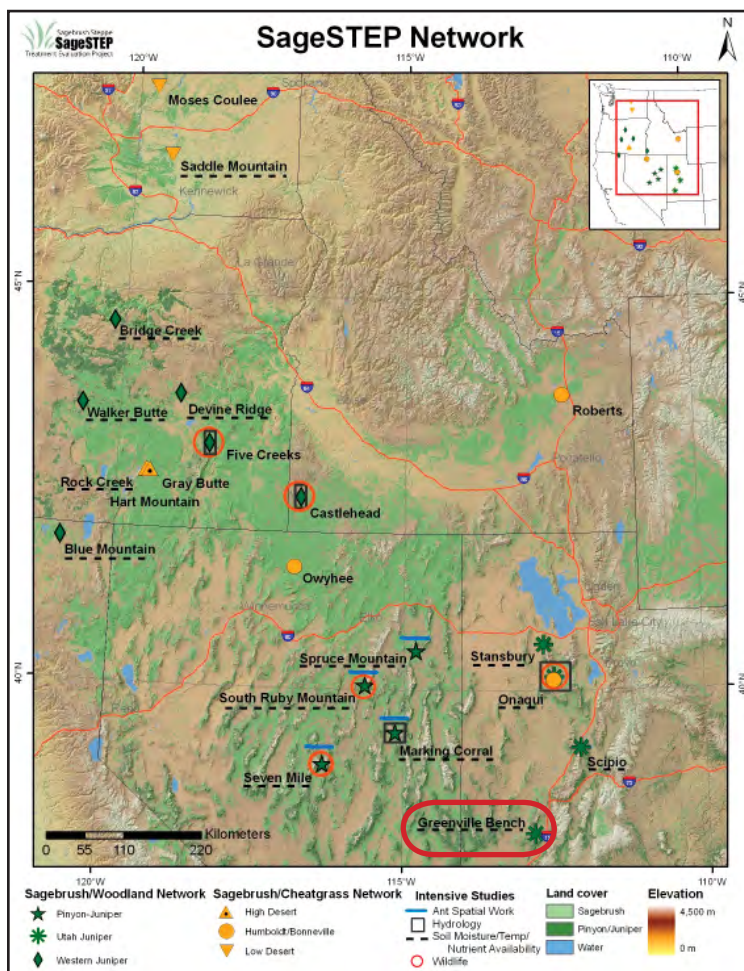
**Wildlife:** Wildlife data collection focuses on the effects of treatments on migratory songbirds.

**Insects:** Butterflies are surveyed for biodiversity, and ants are studied for their importance in seed dispersal and predation in sagebrush-steppe systems.

**Additional Data:** Yearly standard photographs are taken, and multiple soil moisture sensors, and a climate station are present at each site.

**Economics:** Environmental valuation study will identify and measure changes in environmental benefits (such as recreation and ranching) resulting from ecosystem changes caused by treatments.

**Sociopolitical:** Studies focus on understanding the social acceptability of management practices as well as factors that influence managers' willingness to use them.



## **Greenville Bench Site Quick Facts**

**Location:** Beaver County, near Greenville (~5 miles) and Beaver (~25 miles), UT

**Land Management Agency:** Bureau of Land Management Cedar City Field Office

**Plots:** Four 50-acre core plots (Control, Burn, Mechanical, Bull Hog™)

**Elevation:** 5800-6100 ft

**Topography:** 2-28% slopes, N aspect

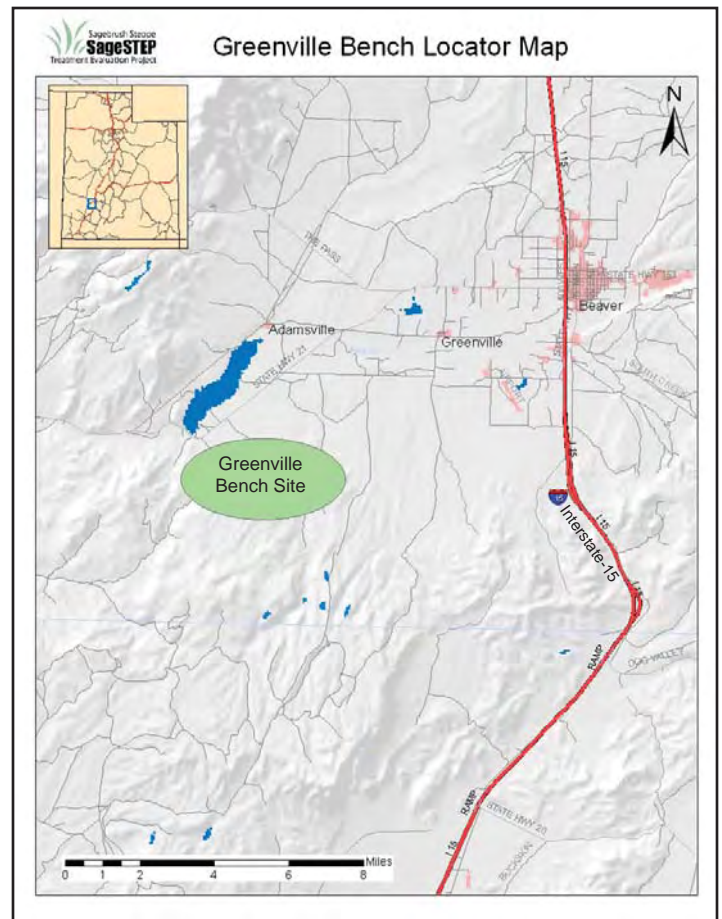
**Common Vegetation:** Utah Juniper, Wyoming big sagebrush, Douglas rabbitbrush, bluebunch wheatgrass, needle-and-thread grass, galleta, Indian ricegrass

**Soils:** very gravelly to cobbly sandy loam

**Fire Regime:** Historically ranging from 20 to >100 years. Woodland invasion suggests that the majority of these communities have not burned since the late 1800's. As woodlands gain dominance, the fire regime shifts to infrequent, high-intensity fires.

**Representative Land Base:** Several million acres in western UT, northeastern NV, and southern ID

**Grazing:** This area is not currently grazed.



## **Land Management Treatments**

This site is part of the study of woodland encroachment into sagebrush communities. The primary objective is to find out how much native sagebrush and bunchgrasses need to be present at the time of treatment in order for managers to improve land health without having to conduct expensive re-seeding. Treatments were implemented at this site in fall 2007.

- Prescribed burn
- Mechanical treatment: all trees >0.5m tall were cut and left on site.
- Bull Hog™: all trees were mulched and left on site
- Control: untreated.



### **Questions about this site?**

Contact outreach coordinator Lael Gilbert at [lael.gilbert@usu.edu](mailto:lael.gilbert@usu.edu) or site manager Maggie Gray at [maggie.gray@usu.edu](mailto:maggie.gray@usu.edu).